



Asphalt Screeds

8 ft & 10 ft

STANDARD/MAX PAVING WIDTHS

For 8' Pavers			For 10' Pavers		
S-8	8'	16'	S-10	10'	30'
EZIV-8	8'	15'	EZIV-10	10'	25'
			EZV-10	10'	26'
Eagle 8	8'	16'	Eagle 10	10'	24'
			EZR2	10'	30'



Roadtec — An Astec Industries Company

Roadtec, Inc. is proud to be a part of the family of companies that make up Astec Industries, Inc. Founded in 1972, Astec Industries, has grown to become America's leading manufacturer of equipment for asphalt road building, aggregate processing, oil, gas and water well drilling and wood processing. Roadtec continues to be an industry leader together with Astec Industries, by applying Astec's model of creative thinking bolstered by a corporate culture renowned for putting customer service first.



THE ROADTEC DIFFERENCE: DELIVERING QUALITY AND INNOVATION WITH SUPERIOR CUSTOMER SERVICE

Dependability

Roadtec has been manufacturing innovative, heavy-highway equipment since 1981. We continue to grow and add new products, yet our personal connection to our customers and our ability to respond immediately to your needs is even stronger.

Customer Service

Our customers benefit from our strong focus on customer support after the sale. Field service technicians live in the regions where they work, and respond quickly. 24/7 parts support will get you the right parts fast, and at a fair price. Our product specialists will train your team on any newly purchased machine. We also offer industry-leading training at our state-of-the-art training facility and in the field.

Count on Roadtec Equipment

We don't build roads. We make the equipment so you can cost-effectively build and maintain the world's roads. With the Roadtec heavy-duty design, we are able to keep your machine working longer while lowering maintenance and operating costs. We make your operators more comfortable and confident with our user-friendly design and our customization for special projects.

POWERFUL 10' PAVERS MADE FOR HIGHWAY WORK

The Right Screed for Your Jobs

At Roadtec, we know that every contractor wants to pave in their own style. That is why we offer fixed width, front-mount extension, and rear-mount extension options direct from the factory. There is no reason to get your paver from one place and marry it to a screed from another provider. You can have confidence when making your purchase decision that the paver and the screed will pair perfectly and pave beautifully.

Front Extendable: Paving width can be adjusted by extending extra screed plates forward of the main screed. The front mounted screed extensions are typically a shorter length than the main screed plate in order to make a more compact machine. These screeds are also lighter and material is not trapped by the extensions, making for a versatile, high performance finisher.

Rear Extendable: Paving width can be adjusted by extending extra screed plates that trail the main screed. The rear mounted screed extensions are typically the same length as the main plate so that they maintain the same angle of attack. Heavy weight makes these screeds good for compacting material, but the material flow is less forgiving to crews.

Fixed Screeds: Paving width is set with a single screed plate. Also known as “wedge-locks,” these screeds are simple and reliable for long consistent pulls that do not require changing width on the fly. Hydraulically extendable strike offs provide flexibility for driveways and pull-offs to the side of the main line.

A Partnership for Better Paving

Carlson's EZ-series screeds are the most commonly requested screeds in the industry regardless of paver brand. While other brands make it harder for you to buy and use a Carlson screed, Roadtec offers these premium options installed factory direct, because Carlson and Roadtec are both part of the Astec Industries family of companies.

Roadtec partners with Carlson Paving Products to offer the best screed options in the industry. In fact, most screeds installed on a Roadtec paver are built at the Carlson factory, regardless of whether the original design is by Roadtec or Carlson.

When designing both screeds and paving tractors, engineers from both companies work together to ensure proper fit and alignment, as well as to share best practices learned through many decades of experience. Constant focus on the asphalt industry is used to continually innovate the product pairings and keeps both sides of the Head of Material optimized for success. This makes it easy for crews using Roadtec pavers to stay on the top of paving performance awards across the United States and around the world.





EXIT 2

WEST



NORTH

Chattanooga
Nashville

ville


CURV
50
MPH

ROADTEC

RP-190e

CARLS
EZIV

THE EZIV: AN INDUSTRY LEADING ASPHALT SCREED WITH AWARD WINNING MAT QUALITY AND WIDE WIDTH ABILITY

EZIV

The industry's leading front-mount screed regardless of the tractor decal, the Carlson EZIV is renowned for its reliability, ease of maintenance, and award winning mat quality. Featuring an advanced pivot point for leading thin lift paving ability, advanced electric heating elements, and Carlson's leading single slide extension support system, the EZIV continues to set the standard against which all other front mounts are measured. The EZIV is available in 8-foot and 10-foot platforms, allowing the screed to be mounted to any paver produced by Roadtec.

Adjustments for Perfect Mat Quality

No other front-mount screed in the industry matches the recognitions and awards the EZIV has helped contractors achieve, including multiple Sheldon G. Hayes Awards. This is due to the platforms' simple adjustments for exceptional mat quality, including easy plate leveling through cone adjustments, tightly fitted pre-strikes offs, angle of attack, and lead crown adjustment on the fly. Combined with oversized hardware, the EZIV keeps and holds its adjustments longer, allowing contractors to achieve award winning mat quality on any paving application.





Leading Extension Support

Utilizing a unique single slide extension support system, the EZIV drastically reduces component replacement costs while achieving exceptional rigidity of its extensions. The extension's 2-inch chrome rods are firmly fixed to a heavy-duty tubular frame, with the rods providing fluid inboard and outboard motion. The 6-inch tubular frame prevents independent movement of the rods while providing leading support and rigidity, even at maximum widths. Combined with the industry's largest adjustable slide block bushing for front-mount screeds, the EZIV's extension support system truly sets itself apart while allowing wide width paving up to 22-feet (EZIV-08) and 25-feet (EZIV-10).

Keep Your Crew Happy

Creating a safer, more productive environment for crews, the EZIV continues to set the standard for contractor focus. Featuring rubber isolated 20-inch deep foldable walkways, the EZIV provides a comfortable and safe operating platform even on the longest days and nights. Along with its conveniently located cup holders, 110v outlets for accessories, depth rods and holders, shovel holders, clip board holder and legendary Carlson food preparation oven, no other screed can match the attention to the needs and wants of contractors like the EZIV.



THE EZV: A SCREED WITH UNMATCHED PERFORMANCE, UNEQUALLED CONTRACTOR FOCUS, AND UNPARALLELED MAT

EZV

Contractors demand versatility from their machines, and the Carlson EZV delivers with its unique ability to pave as both a hydraulically extendable and fixed width platform in a single screed. Available for all 10-foot Roadtec pavers, the new generation of Carlson front-mount screed sets a new bar for extension support, provides contractors superior heat management through its zonal touchscreen interface, and leads the industry in standard crew comfort features.

Adjustments for Perfect Mat Quality

Featuring a 26-inch deep, 450 Brinell-rated one piece main screed plate, the EZV offers flatter angle of attack and more screed surface, equating to enhanced mat quality. Plate life cycle is furthered by Carlson's innovative deck cone system, simplifying leveling procedures while allowing infinite adjustability to the EZV's main and extension plates. Along with oversized slope adjustments, pre-strike off lock outs, and pull pins for lead crown adjustment on the fly that all hold their adjustment for greater intervals between leveling, the EZV allows contractors to achieve exceptional mat quality through simple adjustments.

A New Standard in Extension Support

The exceptional strength and rigidity of the EZV's class-exclusive extension support system and heavy-duty extension bodies allow contractors to achieve flawless mat quality up to 26-feet without flex. Combined with adjustable slide block bushings, extruded aluminum frame, and enhanced slope plate design, the EZV's extensions support system is 200% stronger than that of its cousin, the EZIV. For specialized projects, or those that mandate use of a fixed width platform, the EZV utilizes a high strength bolt pattern on the main screed and leading fixed width bolt-on extensions to reach up to 30-feet. Available with vibration and without, Carlson offers three fixed width bolt-ons to achieve any width from 10' to 30'.

Consistency in Crew Comfort

While the industry may be ever changing, one constant is Carlson's unwavering commitment to needs and wants of contractors by leading crew comfort features. With its conveniently located integrated LED work lights for night paving, cup holders, 110v outlets for accessories, depth rods and holders, shovel holders, level holders, locking tool boxes and legendary Carlson oven, the EZV creates a more ergonomic, comfortable, and safer platform to help contractors perform at the highest level.



The EZV features a heavy duty, machined power crown assembly with pull pins for adjustment of the lead crown.

Featuring fully adjustable slide block bushing and an extruded aluminum slide track frame, the EZV delivers leading extension support and integrity for reduced component life cycle costs.





THE EZR2: A NEW CLASS OF REAR MOUNT SCREED WITH PERFORMANCE AND AWARD WINNING MAT QUALITY

EZR2

Available for all 10-foot Roadtec pavers, the EZR2 is the screed of choice for contractors that plan to put down many miles of highway lanes. The rear-extendable screed is the right balance of weight and rigidity to dependably produce award-winning mat quality at any width. Featuring a class-exclusive extension support system and 20-inch deep main and extension plates, contractors are able work into ramps and extra lanes while continuing to achieve consistent density and mat quality. Unrivaled, the EZR2 is the most dependable rear-mount screed when paving wide with a leading ability to put down 30' stretches without flex.

Uncompromising Strength at Any Width

Combining exceptional strength, simplicity, and renowned Carlson innovation, the EZR2's extension support system has proven itself to be a superior platform for rigidity. Unlike similar rear mounts in its class, the EZR2's four inch chrome rods are fixed to a tubular frame, providing optimum rigidity and preventing independent movement of the rods. Because the EZR2 does not rely on the chrome rods solely for support, the extension support system of the Carlson rear mount enables operators to pave at all widths without worry of flexing.

Perfectly Tuned

The EZR2 is built with the largest adjustable slide track bushings in its class, adjustable slope cylinders with the ability of slope lock, adjustable vibration from 0 to 3000 vibrations per minute, and a heavy duty machined crown assembly for changes on the fly. With 50 individual cone adjusters, operators are able to increase plate stability with infinite adjustability of the main and extension plates to maximize life cycle and mat quality. No other rear mount platform allows the ease or maintaining of adjustments for leading mat quality like the EZR2.

Carlson Screeds Make Happy Crews

The EZR2 sets new standards for operator safety, platform organization, and crew comfort amongst rear-mount screeds in the industry. Featuring deep telescoping walkways, low extension profile for optimal visibility to the paver's augers, and leading crew comfort features including the legendary Carlson food preparation oven, the EZR2 provides an ergonomic and organized platform for enhanced operator safety. Productivity and safety can be furthered by the addition of Carlson's innovative V3 endgate system, allowing replacement of specialized runners through a simple bolt system for joint matching, Safety EdgeSM, or enhanced joint density and edge compaction.

ROADTEC EAGLE™: A HEATED, VIBRATORY REAR EXTENSION SCREED THAT ACHIEVES SMOOTHNESS SPECS WITH EASE

Roadtec Eagle™ 8 & Eagle™ 10

The Roadtec Eagle rear-extendable screed can be mounted to any Roadtec paver because it is available in both 8' and 10' variations. This Roadtec exclusive screed is a proven simple and reliable design. The screed's simplicity can be seen at a glance with many open areas that make it easy for mechanics and crew to perform maintenance. Thanks to the exclusive Roadtec subframe, the time it takes to remove the screed plate is half that of other brands.

Roadtec Eagle™ Screed Highlights

Trailing (rear-mounted) extensions favor more even compaction across the mat. It's the preferred design to use when consistent mat density is key. The Eagle rear-mounted vibratory hydraulic extensions move on dual guide tubes and greaseless Teflon® bushings. Both edges of the Eagle screed plate are curved. This U-shape design is significantly stiffer than traditional single bend designs. This is true of extension plates, too. Adjustable pre-strikeoffs on the main screed and the extensions come in especially handy for thin-lift paving.



Narrow Shipping, No Problem

Many localities have stiff regulations on shipping requirements for any loads that exceed the 8' 6" limit. In order to make logistics easier for contractors, Roadtec designed the 8' version of the Eagle screed to transform for shipping. With just a few bolts loosened, the endgates on this screen swing 180° back to sit behind the main screed plate. In this configuration, the widest point of the tractor is just 8' 4" – safely below shipping restrictions.

Finish More Pavement

If your machine is down for repairs or scheduled maintenance then it is not laying asphalt and making you money. The Eagle Screeds are designed to be easy for your team to keep working all season long. All components are visible and accessible. Exposed extension mechanisms and tubes make it easy to spot issues early and take care of before problems arise. Heat elements can be replaced without removing the main screed plate. All screed plates are reversible, enabling easy changes and even wear.

S SCREED: A TOUGH, RELIABLE SCREED THAT WORKS WELL FOR A WIDE RANGE OF PROJECTS

S Screeds

If paving consistent compaction and texture is absolutely vital, the Roadtec S Screeds are required. A single screed plate that reaches the full width of your paving line ensures consistency and makes it easy for your crew to put out a great product. The Roadtec fixed-width screed can be mounted to any Roadtec paver because it is available in both 8' and 10' variations. Auger and screed extensions fit both the S-8 and the S-10 models so you don't have to double your parts. These tough, reliable screeds will meet your expectations every day on every job.

Agility from Strikeoffs

While the simplicity of a fixed-width screed helps make paving jobs smooth, sometimes a little extra reach is important. The S-Series screeds have strikeoffs to let the crew send material out to driveways, pull-offs, or even shoulders. Hydraulic strikeoffs extend 8 feet (2.4 m) or 10 feet (4.1 m) wide and can be articulated up or down to form driveways, pull-offs, and other special roadside features. Pull a roadway for a full shift with no need to worry about settings.

Simplicity is King

When uniformity and compaction are the key to earning bonus pay, the S series screeds take away the worry. The bolt-on extensions go on easily and match the main screed plate perfectly. There is never a concern about adjusting different angles of attack for different sections or having one section off-set from others. Simply put on the needed extensions, set the screed down, and make a great mat. The S screeds easily reach 16' and 30', respectively.

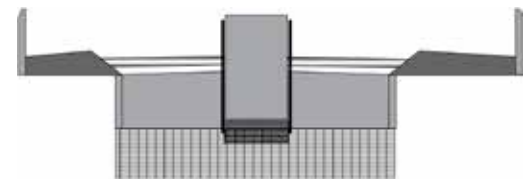
	S8	S10
Standard Paving Width	8' (2.45m)	10' (3m)
Maximum Paving Width	16' (4.8m)	30' (9.1m)
Screed Weight	5,300 lbs	6,400 lbs
Screed Plate Depth	26" (660mm)	32" (813mm)
Power Crown	'+ 3", - 1"	'+ 3", - 1"
Vibration	0 - 3000 VPM	0-3000 VPM
Strikeoff Articulation	'+6.6%, - 3.3%	'+6.6%, - 3.3%
Hyd. Extension Dimensions	-	-
Extension Supports	-	-
Max Extension Slope	-	-
Accessory Outlets	4	4
Accessory Current	4kW, 120V	4kW, 120V
Walkway Width	18" (457mm)	18" (457mm)

S-Series



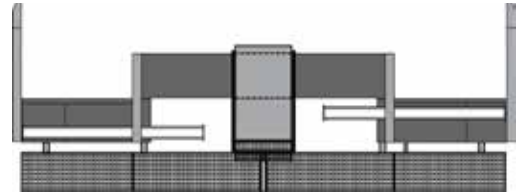
	EZIV-8 & EZIV-10	EZV-10
Standard Paving Width	(8) 8' (2.45m) to 15' (4.57m)	10' (3m) to 19'-6" (5.9m)
	(10) 10' (3m) to 19' (5.8m)	
Maximum Paving Width	(8) 22' (6.7m)	25' (7.6m)
	(10) 26' (7.9m)	
Screed Weight	(8) 6,250 lbs	7,500 lbs
	(10) 7,00 lbs	
Screed Plate Depth	26" (660mm)	
Power Crown	'+ 2.5", - 1.5"	'+ 2.5", - 1.5"
Vibration	3" / 1" (76 / 25 mm)	3" / 1" (76 / 25 mm)
Strikeoff Articulation	0-3000 VPM	0-3000 VPM
Hyd. Extension Dimensions	(8) RH 4'w, LH 3'w, 8"d	RH 5'w, LH 4'w, 8"d
	(10) RH 5'w, LH 4'w, 8"d	
Extension Supports	Carlson® Single Slide Track System With Adjustable Slide Block Bushings	Carlson® Single Slide Track System With Adjustable Slide Block Bushings
Max Extension Slope	'+ 9%	'+ 9%
Accessory Outlets	4	4
Accessory Current	4kW, 120V	4kW, 120V
Walkway Width	20.5" (521mm)	20.5" (521mm)

Carlson EZIV & EZV Series



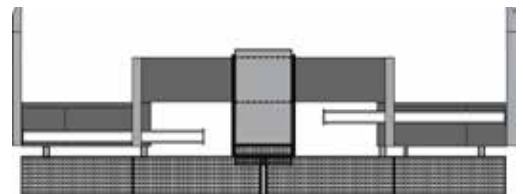
	Eagle-8	Eagle-10
Standard Paving Width	8' (2.45m) to 15'-6" (4.7m)	10' (3m) to 19'-6" (5.9m)
Maximum Paving Width	20' (6m)	26' (7.9m)
Screed Weight	7,200 lbs	8,200 lbs
Screed Plate Depth	20" (508mm)	20" (508mm)
Power Crown	' + 3", - 1"	' + 3", - 1"
Vibration	0-3000 VPM	0-3000 VPM
Strikeoff Articulation	-	-
Hyd. Extension Dimensions	L&R at 3' 9"w, 20"d	L&R at 4' 9"w, 20"d
Extension Supports	Dual 5" guide tubes with Teflon bushings	Dual 5" guide tubes with Teflon bushings
Max Extension Slope	+ 14%, - 5%	' + 14%, - 5%
Accessory Outlets	4	4
Accessory Current	4kW, 120V	4kW, 120V
Walkway Width	18" (457mm)	18" (457mm)

Roadtec Eagle™ Screed Series



	EZR2
Standard Paving Width	10' (3m) to 19'-6" (5.9m)
Maximum Paving Width	30' (9.1m)
Screed Weight	8,275 lbs
Screed Plate Depth	20" (508mm)
Power Crown	' + 3", - 1"
Vibration	0 - 3000 VPM
Strikeoff Articulation	-
Hyd. Extension Dimensions	L&R at 4' 9"w, 20"d
Extension Supports	Carlson® Single Slide Track System With Adjustable Slide Block Bushings
Max Extension Slope	' + 12%, - 5%
Accessory Outlets	4
Accessory Current	4kW, 120V
Walkway Width	20.5" (521mm)

Carlson EZR2 Series





ROADTEC.COM

ROADTEC an Astec Industries Company

800 MANUFACTURERS RD • CHATTANOOGA, TN 37405 USA • 800.272.7100 • FAX 423.267.7104 • roadtec.com

030218



© 2018 Roadtec, Inc. All Rights Reserved